

HEXCYCLE® IV

MADE IN THE USA



Maximize Collections & Minimize Environmental Impact!!

- Engineered with the environment in mind of high efficiency structural plastic which maximizes strength with minimal use of plastic.
- Expect low shipping costs with fuel saver engineered product that ships flat.
- Reduce improperly sorted materials and downstream costs.
 - Clear and distinct fade proof colors with bright crisp symbols.
 - Variety of shaped holes and recoiling flaps.
 - Identification decals included with every bin.
- Compact efficient design - 30 gallon bin only uses 18" diameter of floor space.
- Angled lid prevents build-up of recyclables and waste on top of bin.
- Hinging and latch tight top to secure liners and prevent loss of lids.
- Easily carry heavy loads and minimize back injuries with ergonomically placed hinged handle.
- 100% Recyclable Bin – Made from a minimum 30% post industrial recycled plastic.
- Bins packaged in 100% recycled cardboard.



Wheel Option



Can Crusher Attachment



Decals Included:

ALUMINUM
PRINTER CARTRIDGES
CELL PHONES
BOTTLES & CANS
NEWSPAPER
MAGAZINES
BATTERIES
PLEASE RECYCLE
CANS PAPER
PLASTIC BAGS
GLASS ONLY

Available Colors:



Markable Liners:



HEXCYCLE® IV

HexStation™ Solution Centers

MADE IN THE USA

Arrange, secure, and organize multiple recycling and waste bins together with a contoured wood base. Configure the perfect station for your establishment's specific recycling requirements.



COLOR OPTIONS

Blue/Silver

Green/Silver

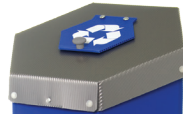
Silver/Silver

Black/Silver

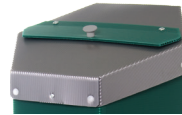


LID OPTIONS

Hinging Lid



Can & Bottle



Paper



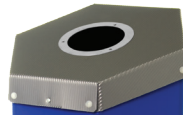
Large Opening



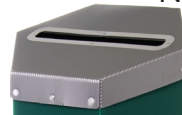
Trash

Color of lid flap will match the Hexcycle® Bin color.

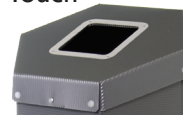
No Touch



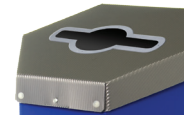
Can & Bottle



Paper



Large Opening



Universal

HEIGHT OPTIONS

30"



39"

