

WEDGE CYCLE™

MADE IN THE USA

Recycling is looking better all the time.

- This low profile unit fits flush against a wall for minimal space usage.
- Modular design enables the flexibility to create your own recycling center.
- Available with paper or can bottle collection graphics.
- Send a clear message with tasteful pictorial graphics
- Aesthetically enhanced with riveted steel at the corners and deposit point.
- Conveniently separate materials at the point of collection with various access shapes.
- Hinging Lid is connected to unit preventing lost or missing pieces.

Hinging Lid and Handle for added convenience



Specifications

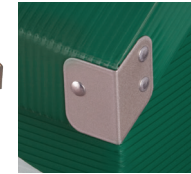
Size: 32" H x 18" W x 11.5" Deep

Weight: 5.5 lbs

Gallons: 16

Material: Galvanized Steel and Heavy Duty Twin-Wall Polypropylene Plastic

Steel Enhanced



Universal Model



Markable Liners



Recyclingbin.com™
The Ultimate Recycling Equipment

All Rights Reserved • Patents Pending

For more information or to order call (800) 910-4757 or visit us at www.Recyclingbin.com