

Nature Bin™



Earth Bin™



Ski Bin™



A-Bin™



Coastal Bin™



- Keep recyclables out of sight while enhancing your common areas.
- Steel kit frame now enables bin to be used outside without fear of theft or damage.
- Steel includes 4 corner supports, steel hinge for the lid, eyeholes on rear to secure to immovable object, heavy duty steel floor.
- Full color photo graphical collection system conveys a great message with awesome visuals.
- Made of 100% UV inhibited plastic for indoor or outdoor placement.
- Patented design assembles easily in minutes.
- Raised floor prevents wearing seen in other products.
- Heavy duty stainless steel knob will not rust.
- Includes high quality printed identification decals.
- Made of 30% post industrial recycled plastic.
- Bin is 100% Recyclable

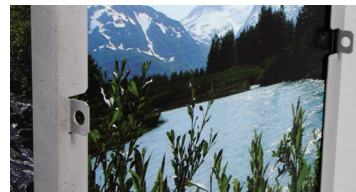
Specifications

Size: 17.5" x 17.5" x 40" H

Weight: 19 lbs

Gallons: 40

Material: Galvanized Steel and Heavy Duty Twin-Wall Polypropylene Plastic



Eyeholes on rear to secure to immovable object or connect bins together

Markable Liners:



Steel Strap secures lid to base

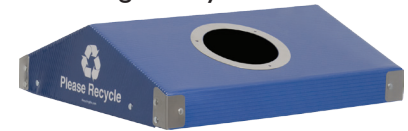


Hinging Lid

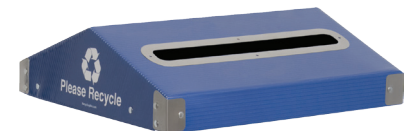


Shown with available recycling liner

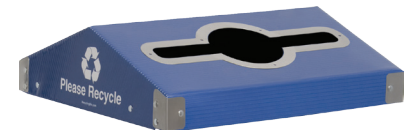
Select the lid style that's right for you.



Can/Bottle



Paper



Universal

All lids are available with steel rim or hinging access flap.